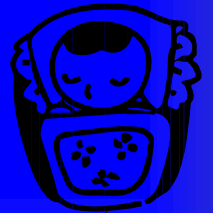
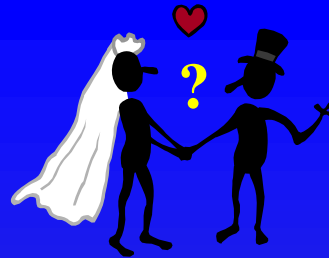
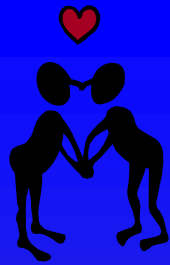
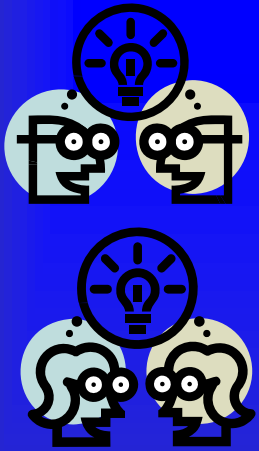


How can we discuss fertility-related behaviors without talking about fertility intentions?



Jacinda K. Dariotis

Johns Hopkins Bloomberg School of Public Health
Center on Adolescent Health

34th Annual Psychosocial Workshop
Presentations on Fertility & Contraception

Why should we care about fertility intentions?

- What predicts future behavior?
 - Past behavior
 - Intentions
 - Type & Degree
- Below-replacement fertility threat & Pronatalism:
 - Previous policies have failed - why?
 - Insight from studying how intentions influence fertility
 - Requires embracing a new perspective:
 - Emergence
 - Persistence vs. change
 - Process
- Potential for increased investment & behavioral responsibility
 - What do we know about unwanted fertility outcomes?
 - Psychological distress, maltreatment, life-course disruption
- Unmet need at 40+?
 - Temporal juxtaposition issues
 - A-developmental

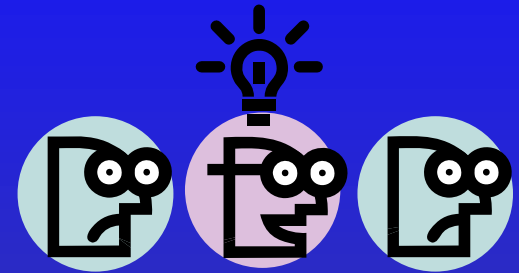
What Do We Know about Fertility Intentions & Behaviors?

- Do People Make Fertility Decisions?

- No direct empirical evidence.. we infer:

- For some, yes.

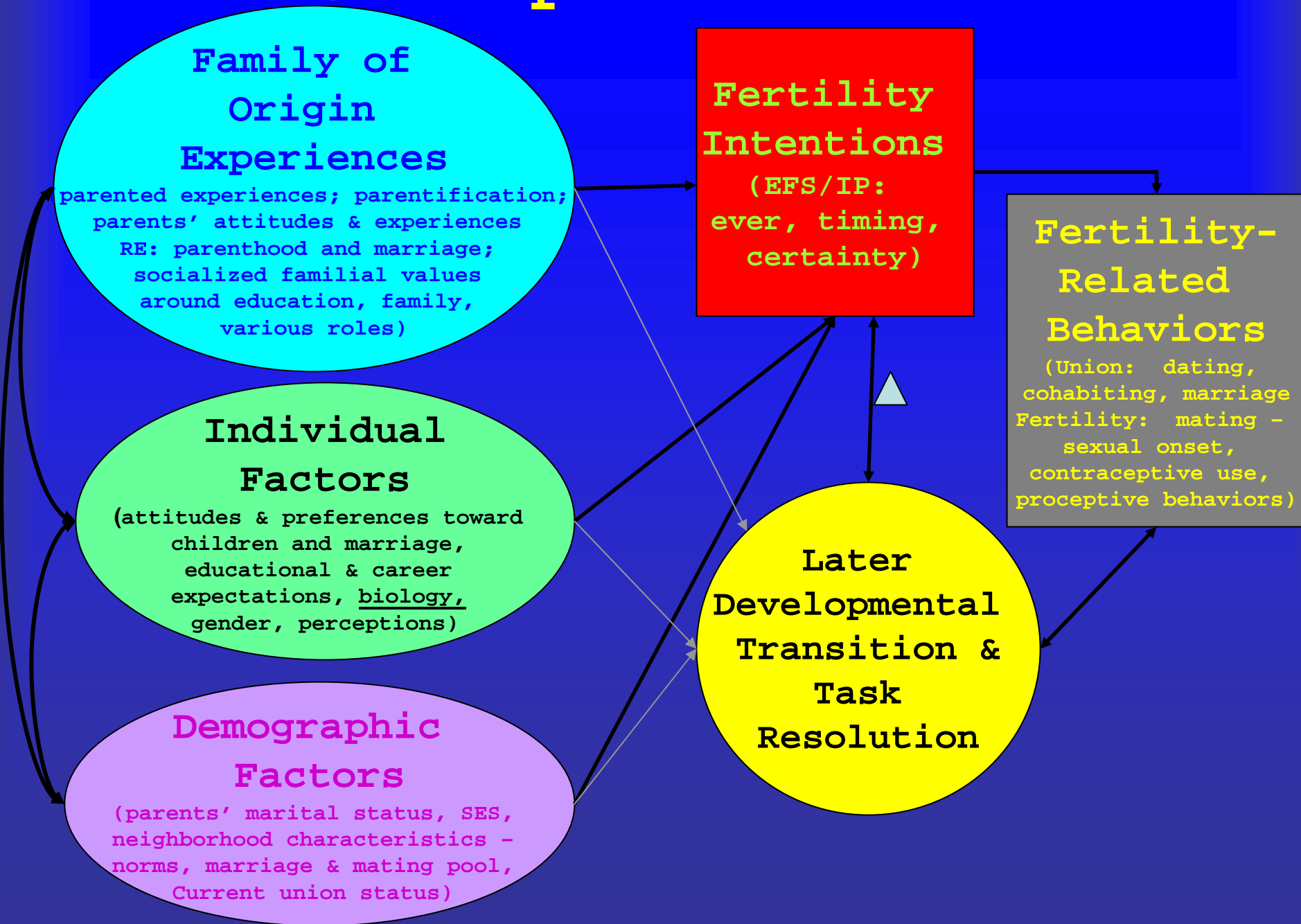
- Nonconformists (EFS=0, 1, 4+)
 - Parity-specific



- For most, no.

- Status quo & Law of Inertia
 - Large percent of unplanned pregnancies
 - » Marital, nonmarital, adolescent

Conceptual Model



Comprehensive Conceptual Model

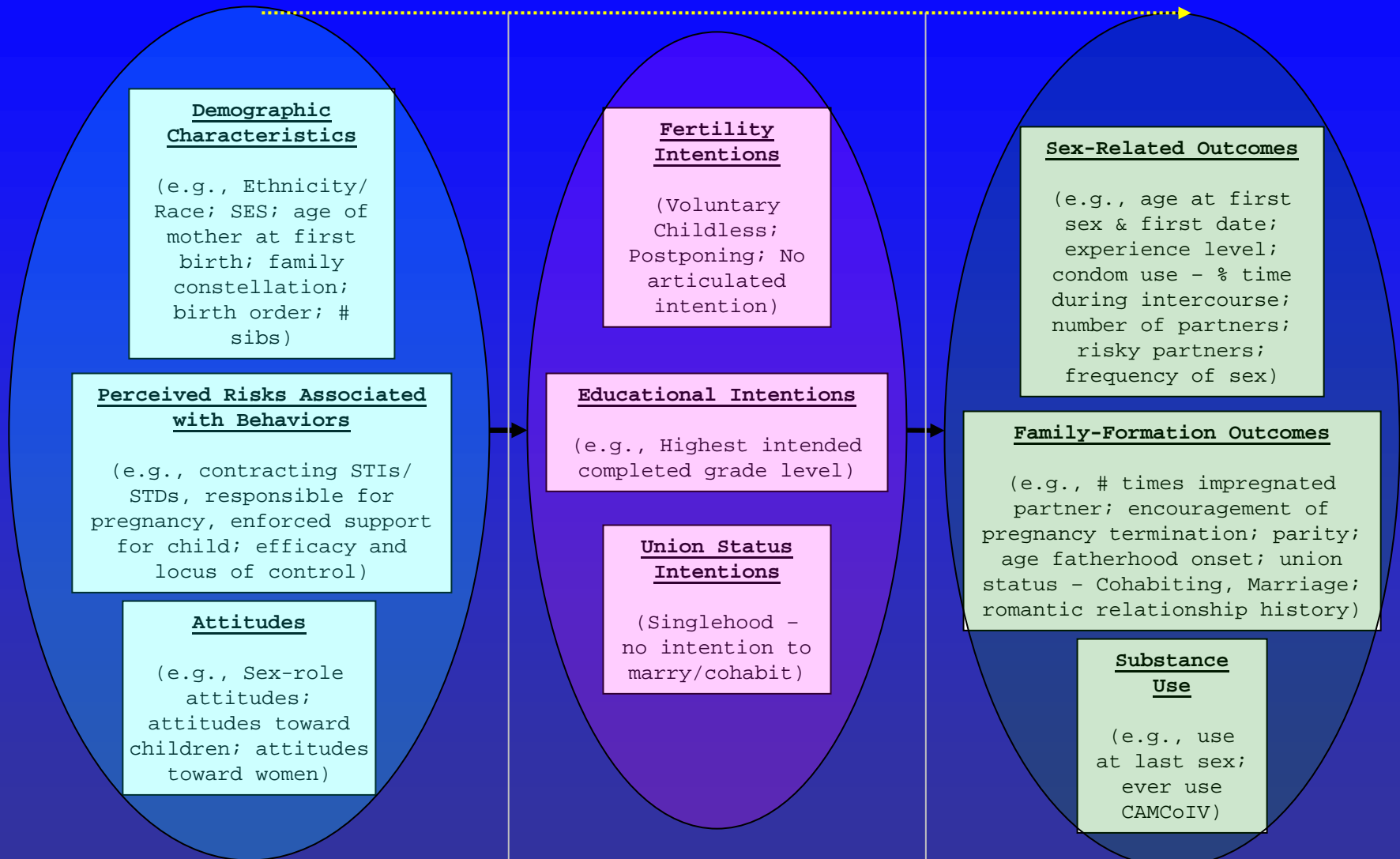
ATTITUDINAL/ INDIVIDUAL



COGNITIVE/ INTENTION



BEHAVIORAL



*Given the mediation nature of this study, it is hypothesized that the direct relationship between individual characteristics/ attitudes and behaviors (represented by dotted yellow line) will become nonsignificant with the introduction of intentional variables in the model

Future Inquiry Needed!!!

- Question: To what extent do people make active, conscious, rational decisions about fertility? What does EFS=2 mean?
 - Solution: assessing individual level processes; qualitative data
- Question: What is the developmental trajectory of intentions? When do they emerge? With what degree of certainty?
 - Solution: longitudinal assessment beginning at earlier developmental stages; Preadolescence and childhood?
- Question: What role do families play in the formation and persistence of intentions? What about biosocial factors?
 - Solution: intergenerational studies and within generation sibling studies; biomarkers